

GEDSI Statement of Ambition

The programme conceptualises GEDSI ambition on a continuum from GEDSI-unaware to GEDSI-transformative. This model, represented in Figure 2, is used to set the ambition of the programme across its different components and to measure progress on strategic objectives throughout implementation.

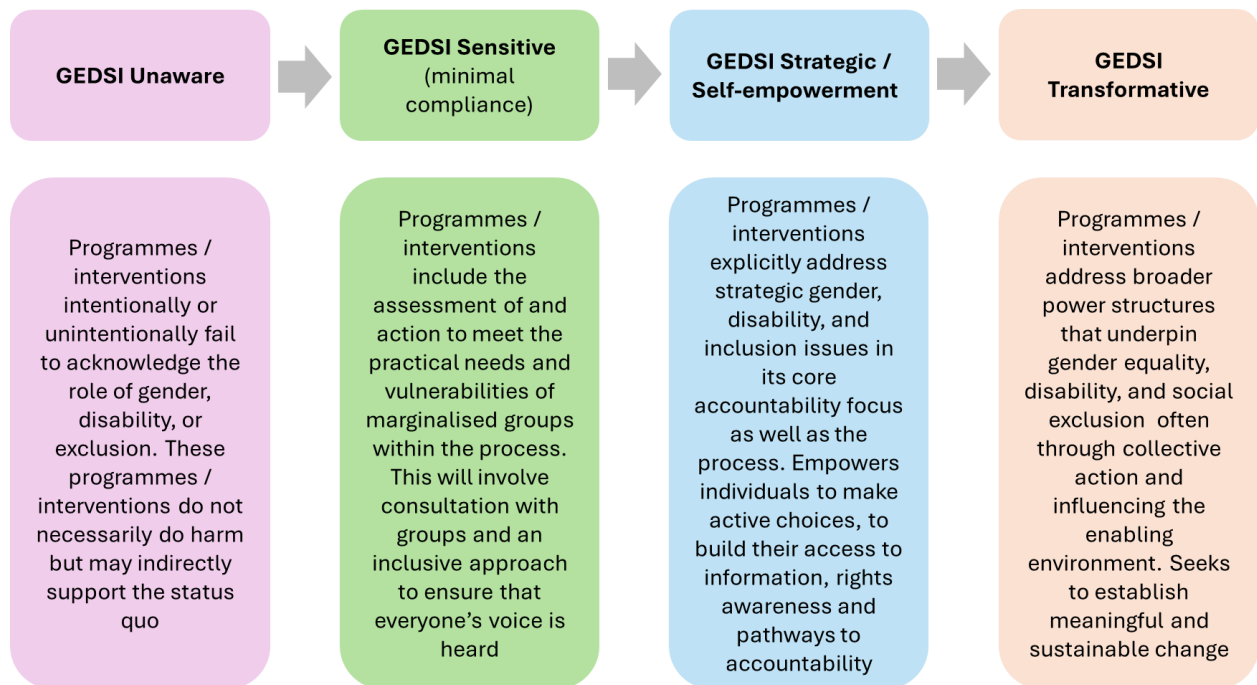


Figure 2 The GEDSI continuum

The CLEAN Helpdesk will aim to go beyond minimum compliance (being GEDSI-sensitive) to be GEDSI strategic and – where possible – GEDSI transformative. Being GEDSI sensitive is seen as a floor or red line that the programme will not go below. The programme will aim to be GEDSI strategic with an ambition to become increasingly GEDSI transformative over the course of the programme. This will entail identifying strategic entry points and opportunities to integrate and advance GEDSI through programme operations and technical assistance.

Guiding principles

The approach to GEDSI across the programme will be framed by the guiding principles and standards outlined below:

Taking an intersectional approach – The programme will take an intersectional approach, understanding that people and communities experience barriers and disadvantages based on compounding and overlapping discriminations (such as ableism, classism, racism, and sexism).

The programme understands that gender is not a binary concept; gender equity means ensuring equity for all gender identities, but recognises that women and girls, and people of minority genders, are often most excluded and therefore need greater focus in programming and policy.

Self-awareness and self-assessment - The programme, and each partner, will ensure that they reflect on their own individual and organisational power and cultures, processes, and values so that they are aligned with the overarching principles set out in the GEDSI strategy and the safeguarding framework. The programme will create spaces and opportunities for partners to reflect and assess their progress in this regard, for example, through the annual GEDSI scan, discussions on building equitable partnerships, and in team meetings.

Collaborative, not confrontational - The programme will ensure that all activities (research, communications etc) are sensitive to the context and are undertaken in a collaborative way. The programme will use language that is culturally appropriate, conflict-sensitive, and does not create a divide between groups, including government and civil society.

Building equitable partnerships – Partners in the consortium will aim to build an equitable partnership founded on respect, transparency, and a commitment to sharing power. The programme will use tools from the Building Equitable Partnership project, alongside other initiatives to promote positive working relationships.